

CBC/CBE

Education in Kenya

**POLL RELEASE
JANUARY 2026**



METHODOLOGY



POLL METHODOLOGY

Who sponsored the poll

The poll was sponsored and financed by Infotrak Research & Consulting Limited

When was the opinion poll conducted?

December 2025 – January 2026

How was the opinion poll conducted?

Quantitative interviews were conducted through Computer Assisted Telephone Interviews (CATI)

Survey sample

The survey sample achieved was 1000 to represent the universe of adult Kenyans who were 18 years and above at the time of the survey. The sampling frame was designed using Population Proportionate to size (PPS) guided by the 2019 Census.

What was the margin of error?

±3.10% at 95% degree of confidence.

What was the response rate?

99% response rate.

Weighting

Where the achieved interviews differed slightly from the intended sampled proportions per demographic group, the dataset was weighted to correct for over or under sampling thus ensuring the sample was proportionately representative of the target population.

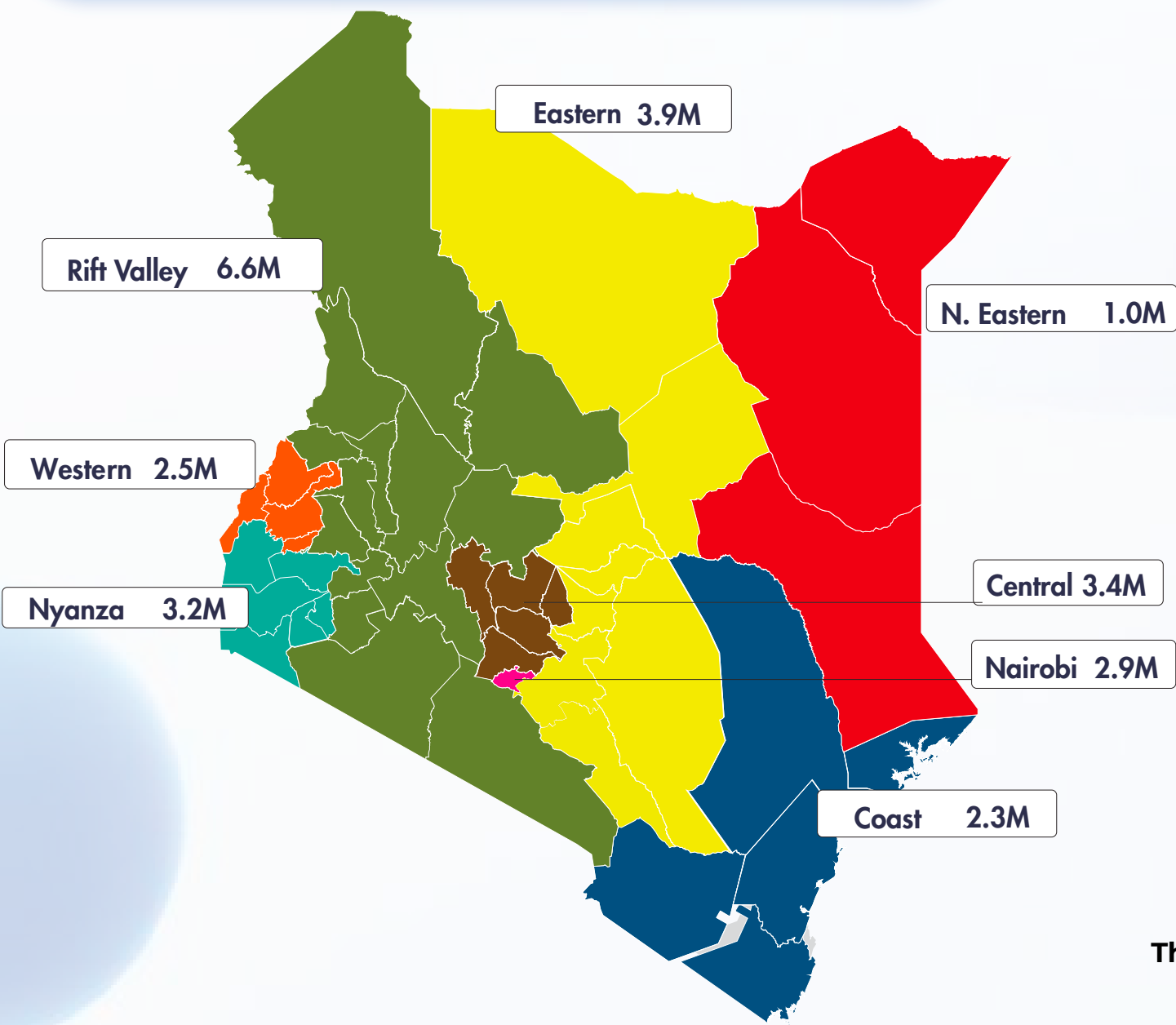
Survey Geographical Coverage

The survey covered all the 47 counties and 8 regions of Kenya. To ensure national representativeness, the distribution of the survey sample across the regions was proportionately allocated.

Data Analysis

Data was processed and analyzed using SPSS 27 statistical software due to its high accuracy and reliability.

Sample Distribution



REGION	Adult Population (Millions)	Regional Proportions	Sample Achieved per Region
COAST	2.3	9%	91
NORTH EASTERN	1.0	4%	40
EASTERN	3.9	15%	150
CENTRAL	3.4	13%	134
RIFT VALLEY	6.6	26%	255
WESTERN	2.5	10%	96
NYANZA	3.2	12%	123
NAIROBI CITY	2.9	11%	111
TOTAL	25.7	100%	1000

The sample was proportionately spread across all the 47 counties of Kenya.

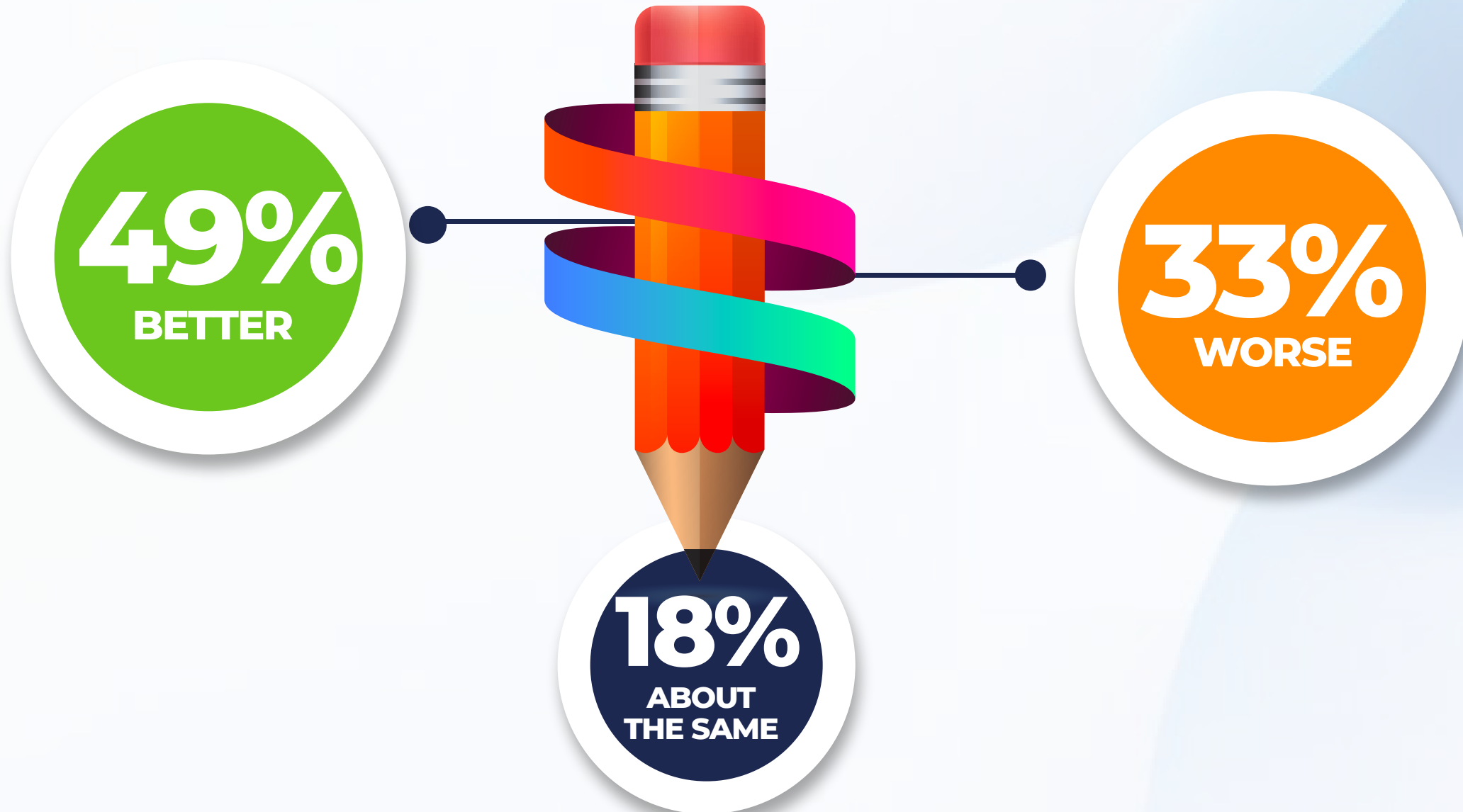
COMPETENCY- BASED EDUCATION



infotrak
Research & Consulting



PERCEIVED QUALITY OF EDUCATION IN KENYA SINCE CBC/CBE INTRODUCTION



How would you rate the overall quality of education in Kenya today since the introduction of CBC/CBE?

n = 1000

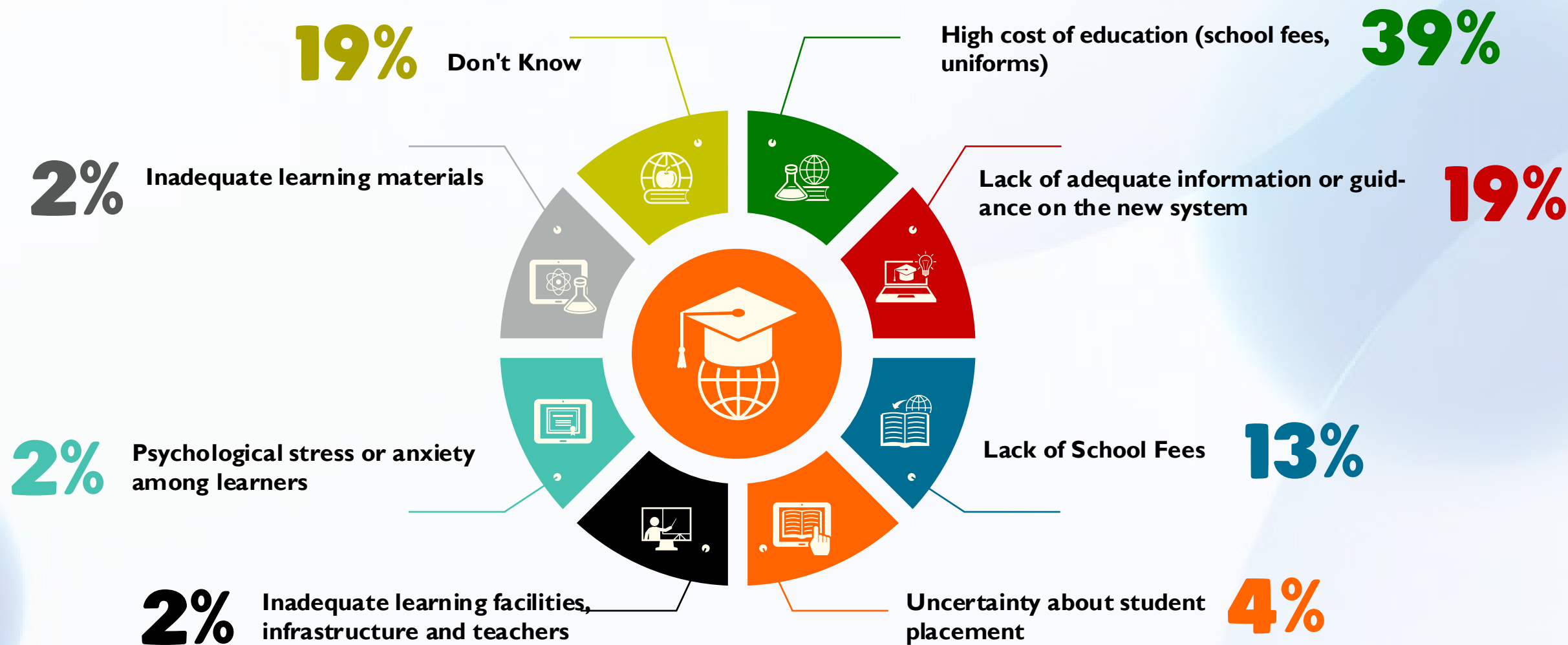
PERCEIVED QUALITY OF EDUCATION IN KENYA SINCE CBC/CBE INTRODUCTION: BY REGION

	Coast	North Eastern	Eastern	Central	Rift Valley	Western	Nyanza	Nairobi	Total
Better	35%	78%	43%	43%	54%	60%	52%	42%	49%
About the same	15%	7%	19%	18%	20%	11%	24%	21%	18%
Worse	50%	15%	38%	39%	27%	29%	25%	36%	33%

How would you rate the overall quality of education in Kenya today since the introduction of CBC/CBE?

n = 1000

CHALLENGES FACED DURING TRANSITION TO SENIOR SECONDARY



What challenges, if any, do you think learners or parents are facing during this transition to Senior Secondary? **n = 1000**

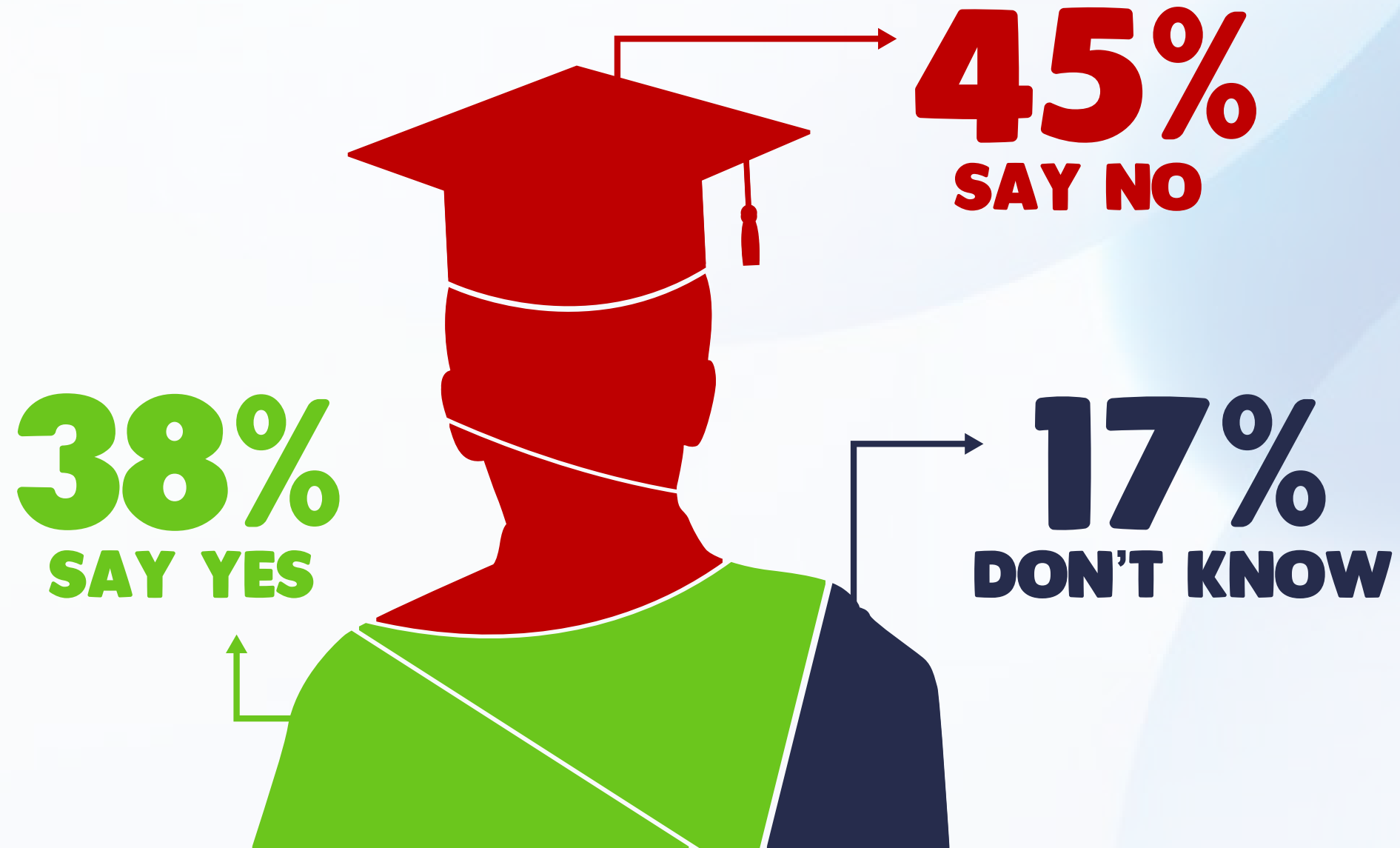
CHALLENGES FACED DURING TRANSITION TO SENIOR SECONDARY: BY REGION

	Coast	North Eastern	Eastern	Central	Rift Valley	Western	Nyanza	Nairobi	Total
High cost of education (school fees, uniforms)	37%	37%	41%	39%	39%	38%	38%	43%	39%
Lack of adequate information or guidance on the new system	27%	22%	23%	17%	18%	23%	9%	14%	19%
Lack of School Fees	10%	10%	8%	19%	13%	11%	19%	9%	13%
Uncertainty about student placement	3%	12%	7%	2%	5%	3%	4%	2%	4%
Inadequate learning facilities, infrastructure and teachers	-	-	4%	5%	2%	2%	2%	-	2%
Psychological stress or anxiety among learners	1%	-	1%	1%	4%	1%	2%	4%	2%
Inadequate learning materials	1%	2%	1%	1%	3%	2%	2%	2%	2%
Don't Know	21%	17%	14%	17%	15%	19%	24%	27%	19%

What challenges, if any, do you think learners or parents are facing during this transition to Senior Secondary?

n = 1000

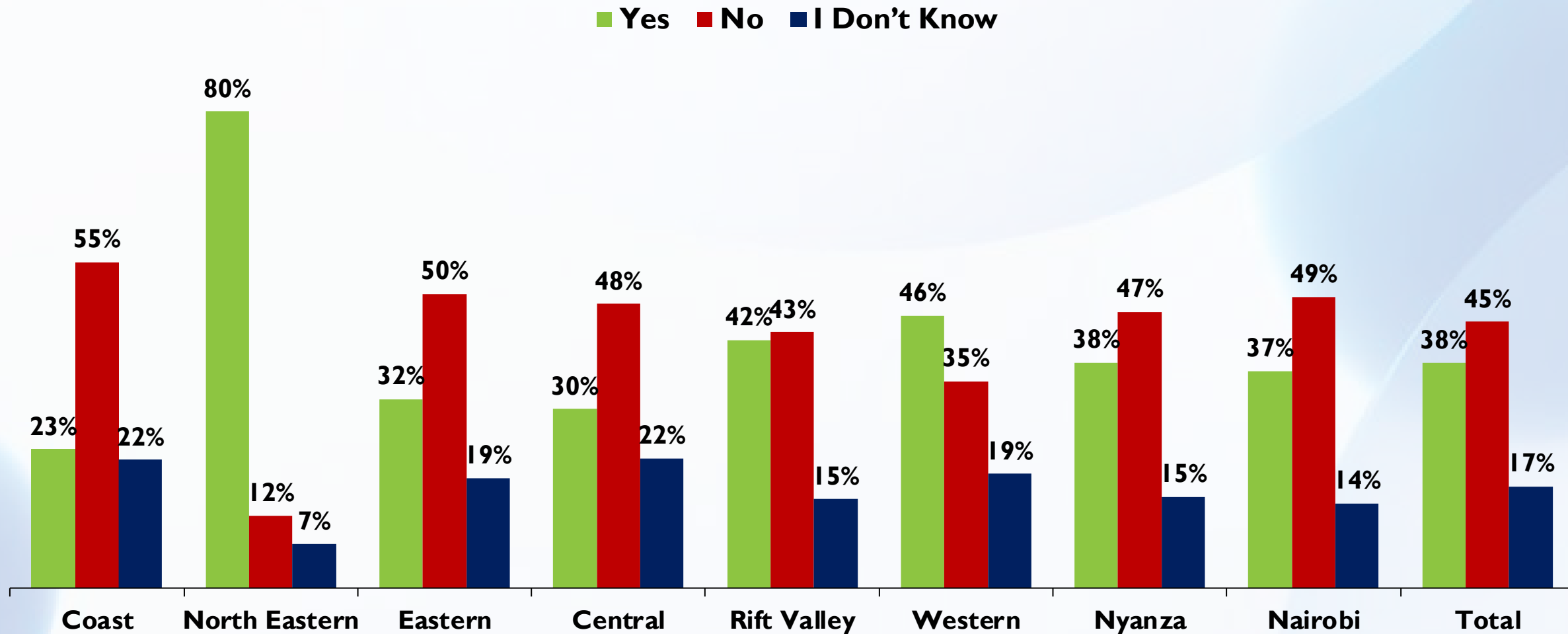
LEVEL OF SATISFACTION WITH CBC GRADING SYSTEM



Are you satisfied or dissatisfied with the CBC grading system of Exceeds Expectation, Meets Expectation, Approaching Expectation, and Below Expectation?

n = 1000

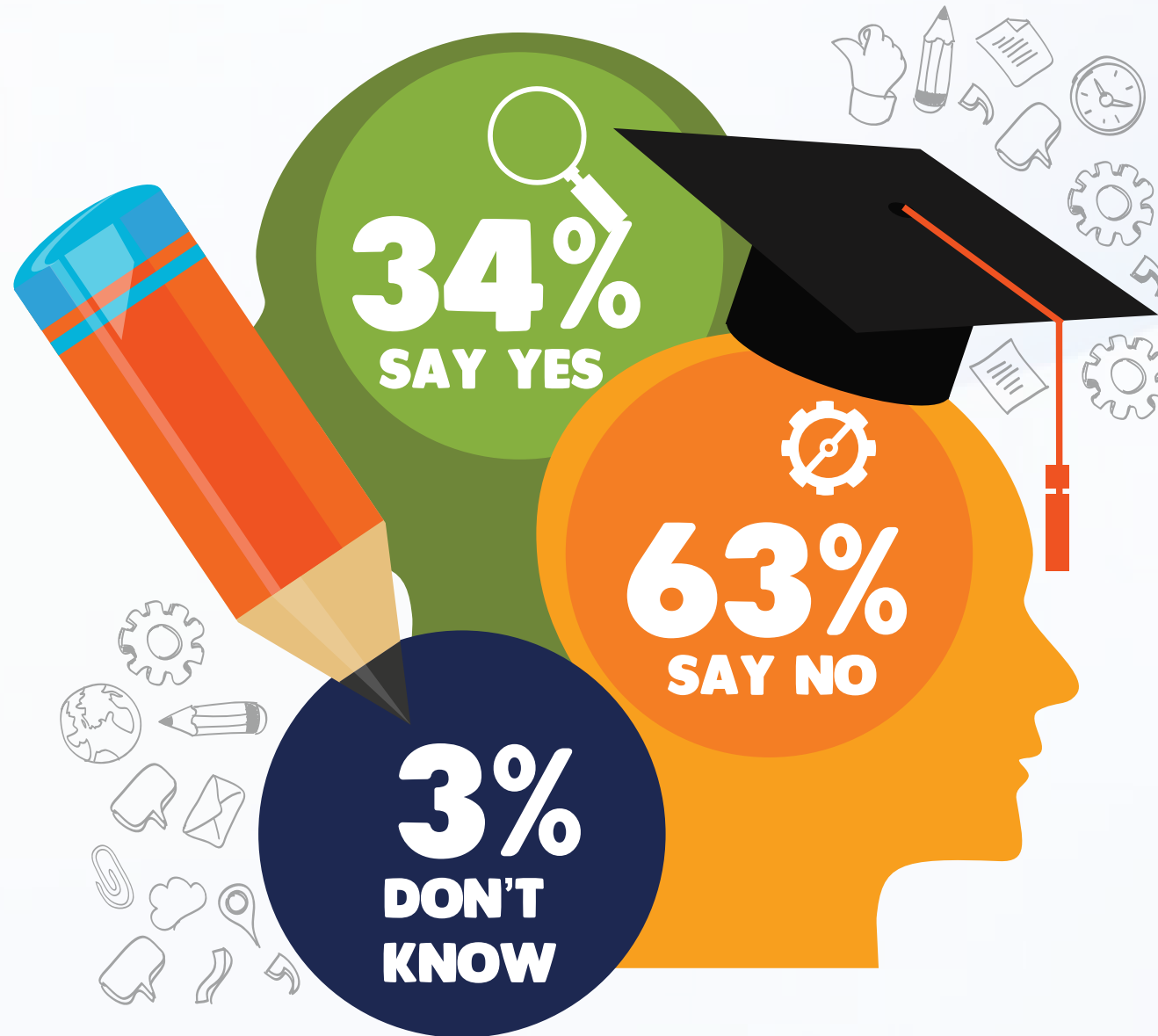
LEVEL OF SATISFACTION WITH CBC GRADING SYSTEM: BY REGION



Are you satisfied or dissatisfied with the CBC grading system of Exceeds Expectation, Meets Expectation, Approaching Expectation, and Below Expectation?

n = 1000

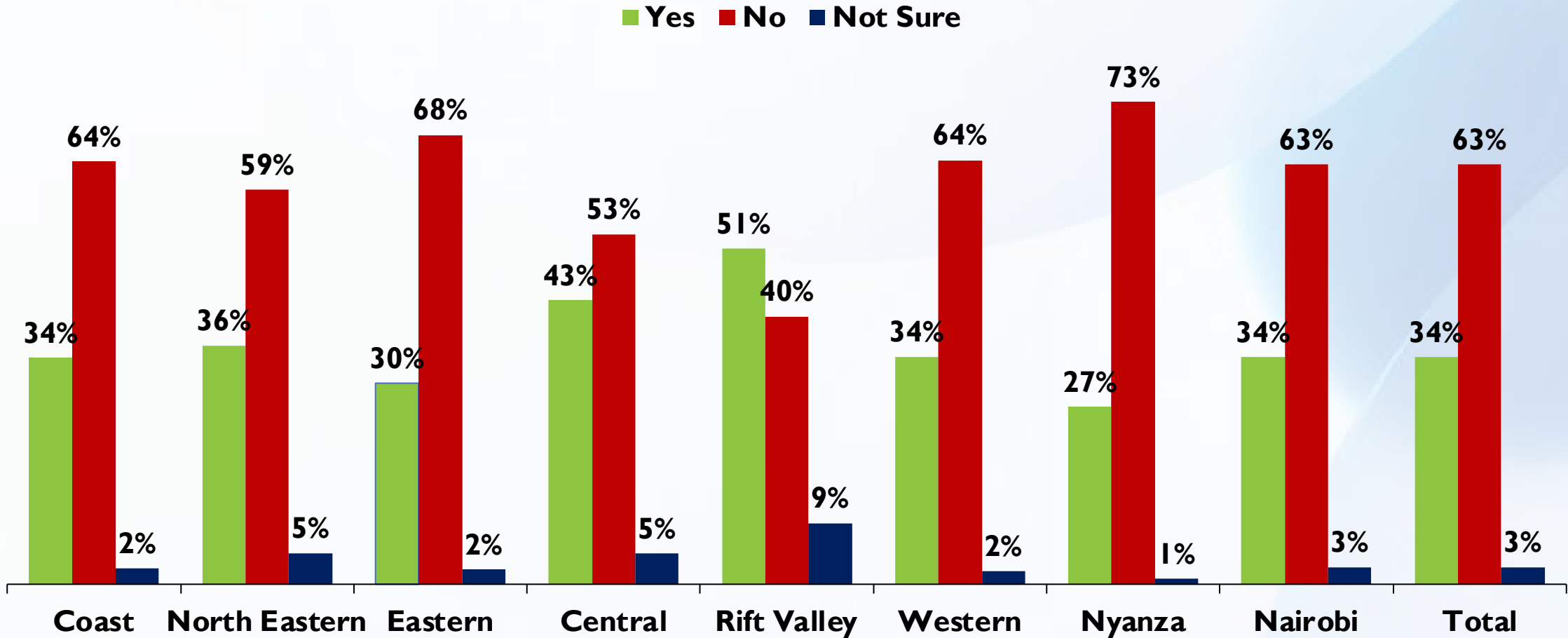
PUBLIC VIEWS ON MAKING SECONDARY SCHOOL UNIFORMS OPTIONAL



Do you think the government should do away with the uniform requirements for secondary school?

n = 800

PUBLIC VIEWS ON MAKING SECONDARY SCHOOL UNIFORMS OPTIONAL: BY REGION



Do you think the government should do away with the uniform requirements for secondary school?

n = 800

SURVEY DEMOGRAPHICS

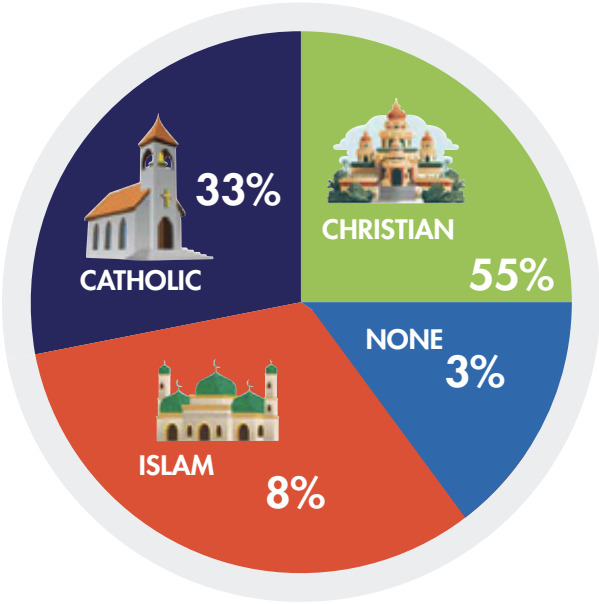


POLL DEMOGRAPHICS

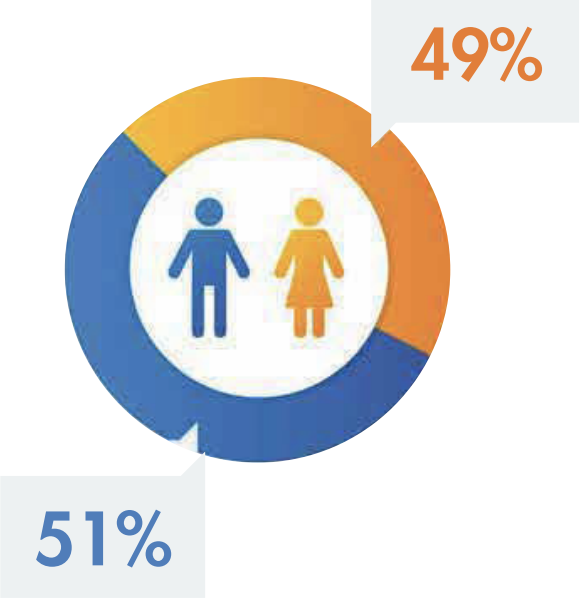
Age



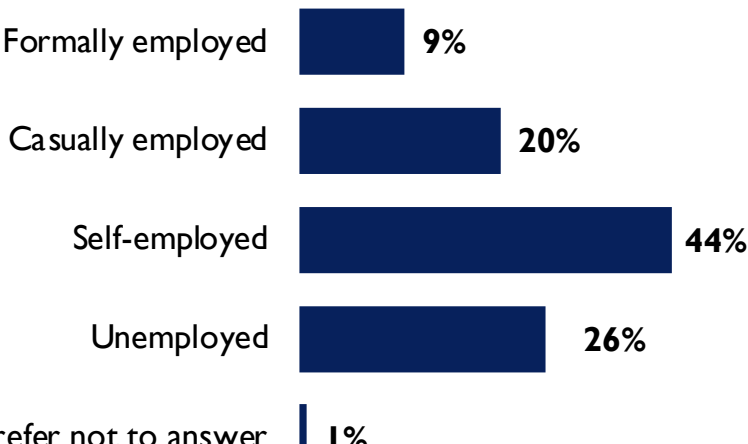
Religion



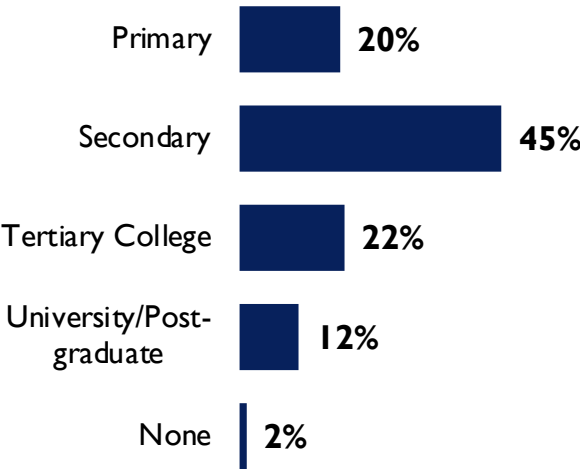
Gender



Employment



Level Of Education





Thank you!



+254 202 3389 88



info@infotrakresearch.com



www.infotrakresearch.com



Jacaranda Avenue



Infotrak Research & Consulting



infotrak
Research & Consulting